

# THE GRYPHON



Jan 2025 : Issue 15



Dear Parents, Guardians, and Students,

I hope this message finds you well as we near the end of another fantastic week at our school.

This week, our junior school truly shone during their fabulous assembly celebrating Burns Night. The children were transported to Scotland, reciting a famous poem, sharing the story of Robert Burns, and even trying some delicious haggis.

Our KS1 children have also been busy impressing us with their creative writing. Their imaginations have been in full swing as they create their own versions of the classic fairytale 'Jack and the Beanstalk'. It's wonderful to see their growing confidence as writers and storytellers. We encourage you to ask your children to share their stories with you – you're sure to be amazed by their ideas!

Looking ahead, we're excited to see the return of our sports fixtures next week. Our teams have been training hard, and I know they're eager to demonstrate their skills and sportsmanship on the field. Please check the school calendar for match details and come along to support if you can.

Thank you, as always, for your continued encouragement and involvement in school life. Wishing you a restful and enjoyable weekend.

Warm regards,

A handwritten signature in black ink, appearing to read 'Paul Jackson'.

Paul Jackson



Photo of the week



# Recap

## Junior School Assembly

This weeks assembly was based around the work of Robert 'Rabbie' Burns.

The children learnt about his fabulous work and were even treated to a true Scottish rendition of the 'Address to a Haggis' poem performed by Mr Ellis.

# THE GRYPHON



KS1 making 3 ingredient sugar free brownies

The students practiced their peeling and chopping



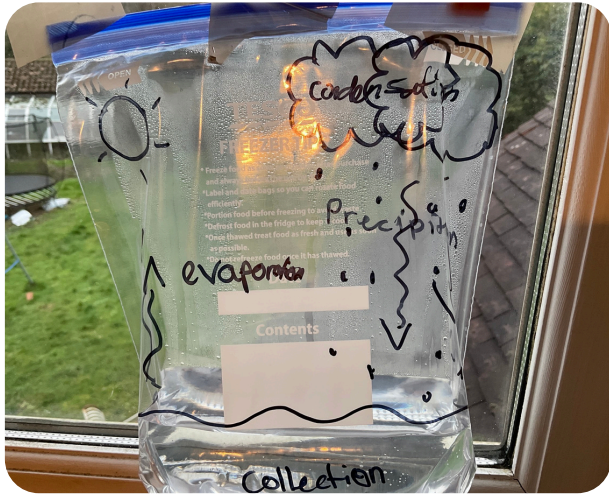
Following on with our bird theme in Forest School, KS2 worked in teams, to create a birds eye view plan of our site

It was lovely to see the students communicating with each other, coming up with ideas and using all the materials from the forest floor.

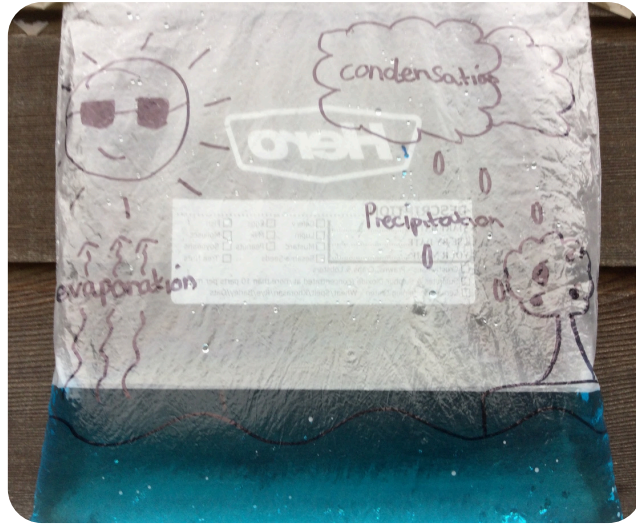


# Humanities

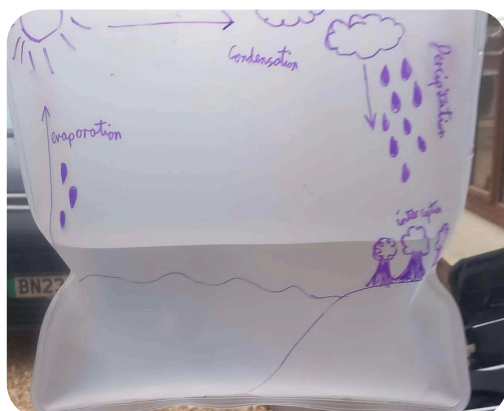
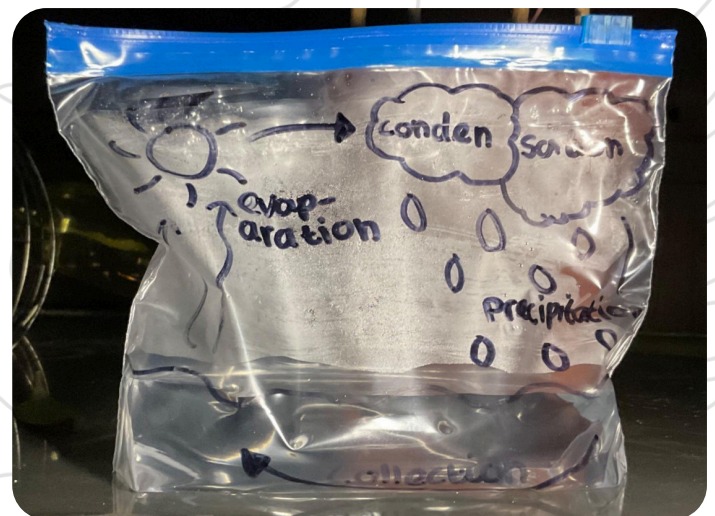
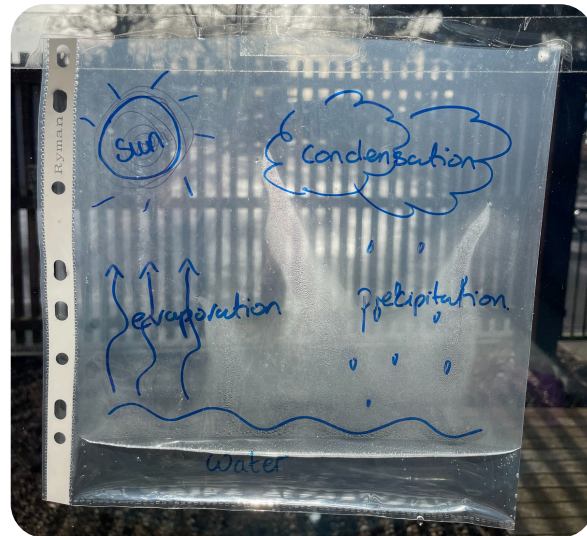
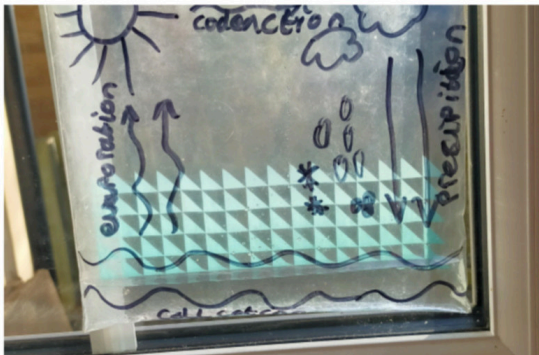
# THE GRYPHON



Year 7 - Water Cycles



Putting ideas into practice, year 7 have been investigating rivers and as part of their learning they created their own versions of a water cycle models



## IMPORTANT MESSAGE FROM MR ELLIS.

### PE Policy on Jewellery:

In the document titled 'Safe Practice: in PE, School Sport and Physical Activity' from 'The Association for PE affiliation, they have strongly recommended the practice of students removing all jewellery/personal effects when participating in PE. This is to establish a safe working environment.

Therefore, in light of this recent national change in procedure, we ask that all students are to remove all forms of jewellery, prior to participating in PE, Sport and Forest School sessions.

To confirm: **NO** jewellery is permitted to be worn during PE/Sport/Forest School lessons.

Best wishes,  
Graham Ellis  
PE Subject Lead

## UPCOMING EVENTS

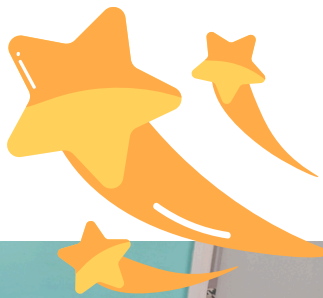
- 
- 29th Jan. Year 5&6 Football Fixture @ Brookes
  - 31st Jan. Year 3&4 TAG Rugby Fixture @ Brookes
  - 3rd Feb. Young Voices
  - 14th Feb. Last Day
  - 17th Feb. Half Term
  - 24th Feb. Term Commences
  - 26th Feb. Parent Meeting with Mr King - 18:00
  - 7th Mar. World Book Day
  - 14th Mar. Duxford Trip (Year 3-6)
  - 20th Mar. KS2 Swimming Gala
  - 21st Mar. Someone Special Tea 15:30
  - 28th Mar. Last Day of Term
  - 21st Apr. Staff Inset Day
  - 22nd Apr. Summer Term Begins

Please see sports fixtures document for more  
information



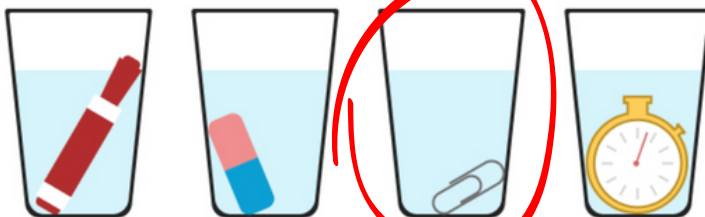
# Stars of the Week

# THE GRYPHON



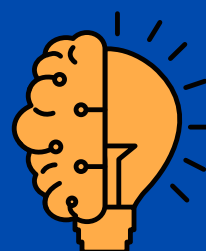
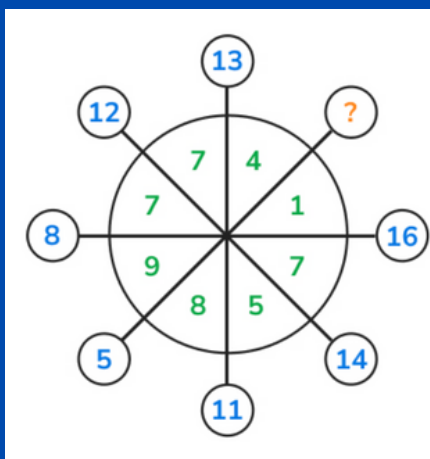
## LAST WEEKS BRAIN TEASER ANSWER

Which glass contains the most water?



## THIS WEEKS BRAIN TEASER

Work out the answer that should replace the ? in this diagram.

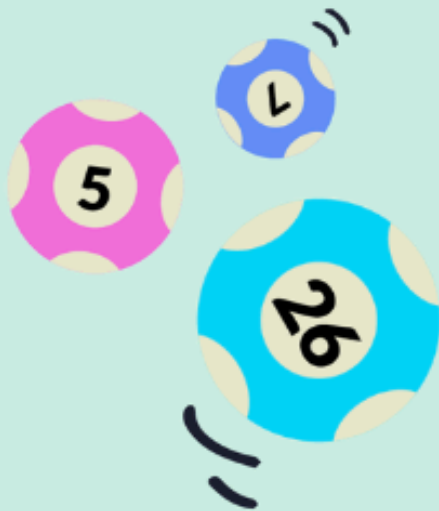




Photography: iStock.com/Dimensions, shutterstock.com/  
Artem Varnitsin, Illustrations: Freepik

# The parents' **lottery**

Support your school with every ticket



**£25,000  
jackpot!**



**Support our school  
and a chance to  
win up to £25,000**

Parentkind



# Be part of something special!

Join The Parents Lottery and help us create a thriving school community. Every ticket you buy funds vital projects, from library books to new playground equipment, helping to enrich the lives of our children.

**Each £1 ticket also gives you the chance to win £25,000 every Friday along with various other prizes.**

We understand that everyone is busy, and finding time to support your school can be challenging. That's why The Parents Lottery makes it so easy to make a real difference. Purchase a ticket online in just a few steps and you'll be automatically entered into the draw. Every ticket sold helps us provide the enriching educational experiences our children deserve. Play The Parents Lottery today and help us empower the next generation.

## How to play

1. Choose the school you'd like your tickets to support by entering the name or school's postcode
2. Decide how many entries you'd like and fill in your details to sign up
3. You've now entered next month's weekly draws, good luck!



**£25,000  
jackpot!**

**Guaranteed  
prizes  
every week**

26



## Support our school



Scan this QR code and enter our school name or postcode to join The Parents Lottery



## How does it work?

There will be various prizes up for grabs each week including the chance to win the £25,000 jackpot! Keep your eyes on the Friday weekly draw to find out if you'll be a winner this week. And remember 60%\* of each ticket you purchase goes to your chosen PTA/school.

Choose us  
on The Parents  
Lottery list

£1 ticket entry  
into each  
weekly draw

Prize draw  
every Friday

Each ticket  
supports our  
school

\*See our website [theparentslottery.org](http://theparentslottery.org) for additional details.



# The parents lottery

Support your school with every ticket

**Parentkind**

The Parents Lottery is a weekly lottery promoted by Parentkind Enterprises Ltd (PEL Company no: 3884281), a wholly owned subsidiary of Parentkind. It is run under our remote operating licence (Licence no: 057904). The Parents Lottery is strictly 18+ only. Playing a lottery is a form of gambling. If you, or someone you know, needs information and/or help with a problem gambling, please call the National Gambling Helpline on [0808 8020 133](tel:0808 8020 133).

GambleAware

GAMBLING  
COMMISSION

