

THE GRYPHON



Oct 2024 : Issue 6

Dear Parents and Brookes Community,

As we reach the end of this half term, I want to take a moment to extend my heartfelt thanks to each of you for your ongoing support. It has been a busy and productive time and your support and positivity has been invaluable in ensuring our students continue to thrive and enjoy their time at Brookes.

Whether through your involvement in school events, supporting learning at home, or simply encouraging your children, your contributions make a real difference. We are grateful for the trust you place in us, to provide your child with an enriching education.

I hope you all enjoy a well-deserved break and we look forward to welcoming the students back refreshed and ready for the next term, as we build up to the festive period.

Thank you once again for being such an important part of our school community.

Warm regards,

A handwritten signature in black ink, appearing to read "Paul Jackson".

Paul Jackson
Principal



Forest School

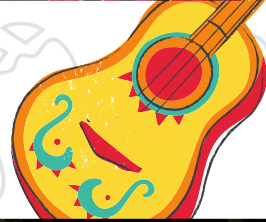
THE GRYPHON



Mexican Tour



THE GRYPHON



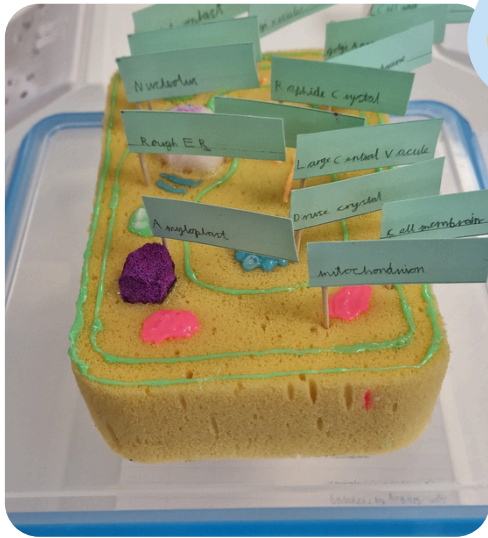
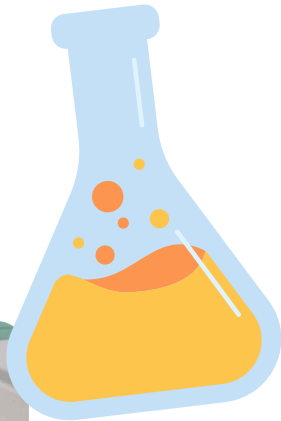
Pumpkin Carving

THE GRYPHON



Science

THE GRYPHON



Sport

THE GRYPHON



Art Trip

THE GRYPHON



Junior Celebrations

THE GRYPHON



Attendance

We will be having a strong focus on improving our whole school attendance, punctuality and appearance. The impact upon children's education, through lost learning, is dramatic. We urge you to ensure that your child is in school and on time everyday, to prevent anyone falling behind with their learning.

Independent Schools Inspections (ISI) track school attendance figures and It is considered that attendance of 90% or below is categorised as persistent absence, which will be closely monitored by school.

At Brookes UK we have a whole school attendance target of 95%

The table below provides an example of the impact of lost learning through pupil absence:

| Attendance % over a school year | Equal to number of days absent | Converted to approximate weeks of absence | Approximate number of lessons missed | School concern |
|---------------------------------|--------------------------------|---|--------------------------------------|--|
| 95% | 9.5 | 2 | 47.5 | Pupil can catch up |
| 90% | 19 | 4 | 95 | Poor attendance (we are concerned) |
| 80% | 38 | 8 | 190 | Very poor attendance (we are very concerned) |
| 70% | 57 | 12 | 285 | Serious concern |

The table below provides an example of the impact of lost learning through pupil lateness.

| Number of minutes late per day over a school year | Approximate equivalent number of days lost learning |
|---|---|
| 5 | 3 |
| 10 | 6.5 |
| 15 | 10 |
| 20 | 13 |



**COMING
SOON**

DATES FOR THE DIARY

Full details of events will be sent out upon our return to school

| Date | Event |
|----------------|---|
| Tues 5th Nov | Yr 11 Careers Fair Ely Cathedral |
| Weds 6th Nov | KS3 Parents Eve |
| Thurs 7th Nov | Yrs 1 - 6 Parents Eve |
| Fri 8th Nov | Yr 11 Geography Field Trip Cambridge |
| Tues 12th Nov | Odd Sock Day - Anti Bullying Week |
| Weds 13th Nov | KS4 Parents Eve |
| Thurs 14th Nov | Bury Lights Yr 3 - 6 |
| Fri 22nd Nov | Newmarket Lights Yr 3 - 6 |
| Weds 27th Nov | Past Yr 11 GCSE Certificate Eve TBC |
| Weds 4th Dec | Yr 11 Art Mock |
| Thurs 5th Dec | Reception & KS1 Nativity |
| Fri 6th Dec | PTA Christmas Fair |
| Tues 10th Dec | Winter Showcase |
| Weds 11th Dec | Christmas Lunch Christmas Jumper Day |
| Fri 13th Dec | Carol Service - Risby Church 2:30pm Term Ends 3:30pm |

Aurora Borealis

THE GRYPHON

