

THE GRYPHON

UK'S NEWEST IB SCHOOL

March 2025 : Issue 22



Dear Brookes Community,

As we approach the Easter holidays, it has been wonderful to witness the welcome return of lighter evenings, bringing with them a renewed sense of energy and joy around the school.

This past week has been filled with moments of pride and celebration. Our Junior School students shone brightly during the inspiring Celebration Assembly, showcasing their fantastic work and demonstrating their creativity and dedication. Congratulations to all who took part – your hard work truly deserves to be celebrated.

A special round of applause goes to the talented students who performed so beautifully in the musical recital. Their commitment and passion were evident in every note, and it was a pleasure to see their confidence and musicality on display.

We were also delighted by the excellent turnout at our second iBrookes IB training sessions. It is inspiring to see so many parents eager to engage and learn more about the opportunities the IB curriculum will offer. Your enthusiasm and support are invaluable as we move closer to this exciting transition.

Another highlight of the week was the very popular and successful PTA Bingo evening. It was fantastic to see so many members of our community come together for a night of laughter, friendly competition, and fun. A big thank you to the PTA for their hard work in organising such a memorable event.

To round off the term, our community came together for the annual Easter Egg Hunt. The laughter and joy shared in the spring sunshine were a perfect reflection of the warmth and spirit that define our school community. Thank you to all the families who joined us and made it such a memorable occasion.

Wishing you all a restful and enjoyable Easter break. We look forward to welcoming everyone back for the summer term, ready for more learning, growth, and shared experiences.

Happy Easter!
Warm regards,

Paul Jackson
Principal



Find the Golden Egg
of every page

iBrookes Schedule

PARENTS			
Date	Time	Title	Description
Friday 7th March	09.00	Introduction to the IB COMPLETED	Learner Profile Structure of the IB What is PYP What is MYP
Wednesday 26th March	18.00	MYP Overview COMPLETED	Candidacy and Accreditation Process Subject Groups Global Contexts Key Concepts Criteria based Assessment
Friday 28th March	09.15	PYP Overview COMPLETED	Candidacy and Accreditation Process Units of Inquiry 6 Subject Areas 6 Transdisciplinary Themes Collaborative Planning
Wednesday 30th April	17.30	MYP Assessment	Criteria based assessments Types of assessment 
Friday 2nd May	09.15	PYPX and Action	Programme of Study Teaching approaches Assessment
Wednesday 7th May	TBC	Personal Project	Community Project Personal Project
Thursday 8th May	TBC	PYP Maths and English	PYP Exhibition Action based learning Sustainable Development Goals
Wednesday 11th June	TBC	Toddle Workshop (PYP & MYP)	Introduction to Toddle
Thursday 12th June	TBC	Toddle Workshop (PYP & MYP)	Introduction to Toddle
Friday 13th June	09.15 (Year 9 students to join)	MYP eAssessments and Projects	Criteria for eAssessments Schedule of assessments Community Project Personal Project

Update OUR NEW GARDEN PLAN



Painting by Mrs Cockayne

Emily competed in a dressage competition on March 16th, riding her young horse Quinn and a friend's horse, Louis VIII. She delivered two impressive tests on Quinn, though she was unfortunately unplaced. However, she performed a stunning novice test on Louis, winning her class and securing a qualification for the championships at Hickstead.



TRIP KS1 West Stow Walk



MUSIC Spring Recital



TRIP Year 1&2 Mountfitchet Castle



THE GRYPHON UK'S NEWEST IB SCHOOL

20% off this Easter

clip'n
climb®
IPSWICH



BOOK FOR EASTER HOLIDAYS (5TH -22ND APRIL '25) BY
4TH APRIL TO OBTAIN DISCOUNT | USE CODE BRKES20
WWW.CLIPNCLIMBIPSWICH.COM



THIS WEEK



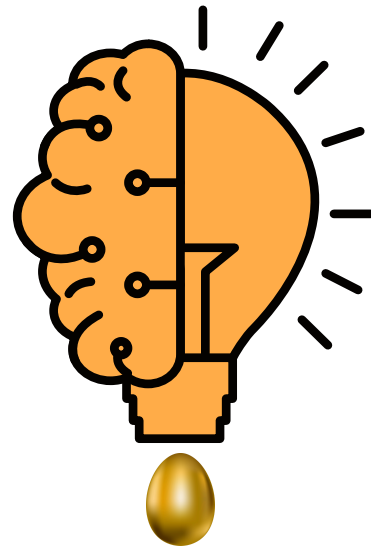
Lunch Time Play

Last Weeks Brain Teaser

Why shouldn't
you tickle an
Easter egg?



Correct answer is
They'll crack up



This Weeks Brain Teaser

What five-letter word
becomes shorter when you
add two letters to it?

SUMMER CLUBS SIGN UP

More details to follow before
the term begins



Photography: iStock.com/Dimensions, shutterstock.com/
Artem Varnitsin, Illustrations: Freepik

The parents' **lottery**

Support your school with every ticket



**£25,000
jackpot!**



**Support our school
and a chance to
win up to £25,000**

Parentkind

Be part of something special!

Join The Parents Lottery and help us create a thriving school community. Every ticket you buy funds vital projects, from library books to new playground equipment, helping to enrich the lives of our children.

Each £1 ticket also gives you the chance to win £25,000 every Friday along with various other prizes.

We understand that everyone is busy, and finding time to support your school can be challenging. That's why The Parents Lottery makes it so easy to make a real difference. Purchase a ticket online in just a few steps and you'll be automatically entered into the draw. Every ticket sold helps us provide the enriching educational experiences our children deserve. Play The Parents Lottery today and help us empower the next generation.

How to play

1. Choose the school you'd like your tickets to support by entering the name or school's postcode
2. Decide how many entries you'd like and fill in your details to sign up
3. You've now entered next month's weekly draws, good luck!



**£25,000
jackpot!**

**Guaranteed
prizes
every week**

26



Support our school



Scan this QR
code and enter
our school name or
postcode to join
The Parents Lottery



How does it work?

There will be **various prizes** up for grabs each week including the chance to win the **£25,000 jackpot!** Keep your eyes on the Friday weekly draw to find out if you'll be a winner this week. **And remember 60%*** of each ticket you purchase goes to your chosen PTA/school.

Choose us
on The Parents
Lottery list

£1 ticket entry
into each
weekly draw

Prize draw
every Friday

Each ticket
supports our
school

*See our website theparentslottery.org for additional details.

The parents lottery

Support your school with every ticket

Parentkind

The Parents Lottery is a weekly lottery promoted by Parentkind Enterprises Ltd (PEL Company no: 3884281), a wholly owned subsidiary of Parentkind. It is run under our remote operating licence (Licence no: 057904). The Parents Lottery is strictly 18+ only. Playing a lottery is a form of gambling. If you, or someone you know, needs information and/or help with a problem gambling, please call the National Gambling Helpline on [0808 8020 133](tel:0808 8020 133).

GambleAware

GAMBLING
COMMISSION

 THE LOTTERIES
COUNCIL